

THE IMPACT CATALYST

Issue - 3

October 2023



Editor's message

Dear Readers,

It is with great pleasure that I welcome you to the third issue of Integra Venture's newsletter - The Impact Catalyst. With each passing edition, we continue to evolve and grow, just as our organization does. This newsletter serves as a window into the heart of our company by sharing of knowledge among our employees, stakeholders, and well-wishers. In this issue, we introduce you to articles on Hospital design and Quality, delve into some exciting projects, and some activities. As we navigate the ever-changing business landscape, we are dedicated to keeping you informed and engaged.

We're also excited to introduce a new section in this issue, "Employee Spotlight," where we will regularly feature individuals from various departments who have demonstrated exceptional dedication, creativity, and leadership. It's an opportunity to learn from our colleagues and be inspired by their journeys. I would like to extend my heartfelt gratitude to our talented contributors and the newsletter team for their dedication in putting together this issue.

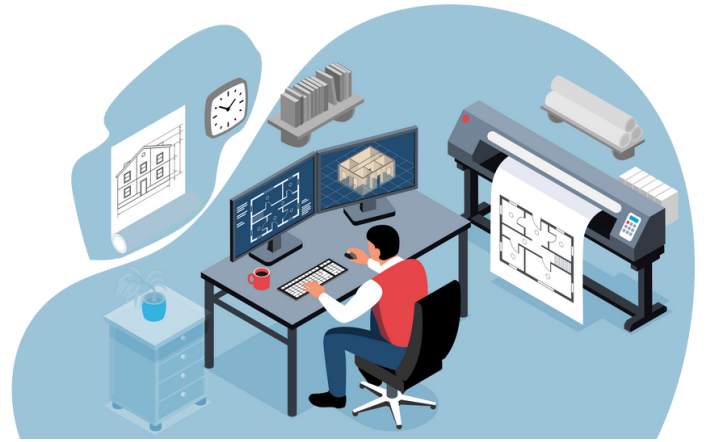
Wishing you an enlightening and enjoyable read!

-Editor





BLOG 1: WE SHAPE OUR BUILDINGS AND LATER THEY SHAPE US



Creating a hospital environment that is conducive to efficient and effective healthcare delivery is a complex task that requires careful planning and thoughtful design. An optimal hospital design goes beyond aesthetics; it prioritizes functionality, safety, and the creation of healing environments. In this article, I will take you through the key principles and strategies that can guide the development of an ideal healthcare facility.

One of the fundamental principles of hospital design is a “functional layout” that promotes workflow efficiency. The hospital layout should be intuitive, with clearly defined pathways for patients, staff, and materials. Ideally, different departments and services should be strategically located to minimize patient travel distances and streamline care processes.

Read more -

Dr. Vijay P. V.
Partner,
Integra Ventures





BLOG 2: UNVEILING THE ESSENCE OF QUALITY- A HOSPITAL'S COMMITMENT TO PATIENTS



The definition of quality, as per the Oxford dictionary, is “the standard of something measured against other things of a similar kind; the degree of excellence of something.” Well, I have my own way of explaining what quality is all about. It is a question that I ask: “When will you wear the helmet? Before or after an accident?” The same answer would be, “Of course, before an accident.” One might even say, “I have been riding motorcycles for the last 20 years. I have never met with an accident.” One song by John Mayer says, “Bad news never has good timing.” So, we don’t know what the future holds. Therefore, it is always better to take the required precautions and be ever ready for uncertain, unforeseen, and undesirable events.

Read more -

Mr. Chaikhomba Thاونawjam
Manager & Consultant,
Integra Ventures



PROJECTS – BEHIND THE SCENE

BEHALI ENGINEERING COLLEGE, ASSAM



Rendered image



Onsite project images

In the hushed corridors of possibility, where blueprints and dreams weave, the hidden architects of innovation meticulously crafted the harmony of an engineering college's destiny. Behind the curtains of imagination, the project took its first breath in January 2020, exhaling a design brief filled with visions of grandeur. With a built-up area of 220493.9 sq. feet, the academic building comprised of classroom function, laboratories, shared functions, auditorium, library including residential facilities hostels, play areas, dinning, common rooms, etc.

Behali Engineering College, which will be a state-of-the-art infrastructure, is expected to provide huge impetus towards furthering technical education in the state and fulfil aspirations of many in the North Bank region.

Facility: Educational Institution
Client: Government of Assam
Built-up-area: 220494 sq. ft

Cont'd...

R.C. AGARWAL HOSPITAL, ASSAM



Rendered images



Onsite project images

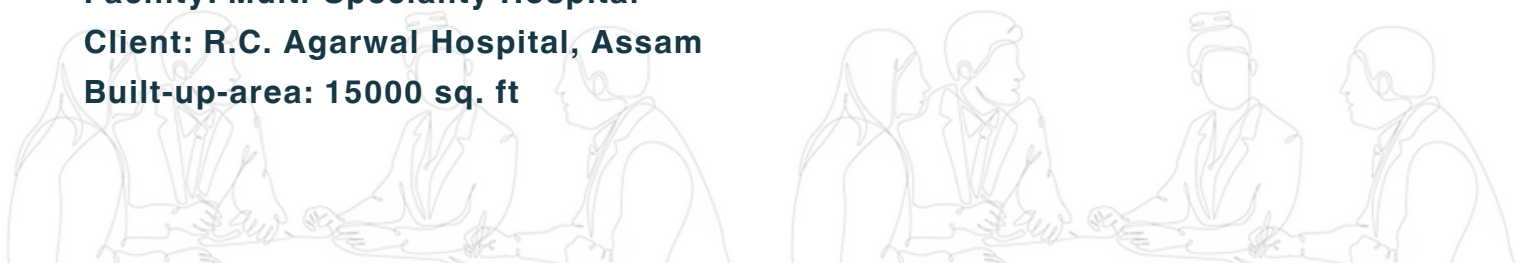
The project showcases a great demonstration of embracing a holistic approach to patient care and focusing on the needs of the users. This ambitious 100-bedded hospital project in 15000 sq. feet-built area, which started in 2022, witnessed the artisans of construction shaping foundations that will cradle dreams of recovery.

The forthcoming hospital is poised to be a beacon of healthcare accessibility for the region's population. Committed to making quality medical services both economical and affordable, it is dedicated to addressing the critical healthcare needs of the community. With a steadfast commitment to delivering medical care, this hospital aims to become a cornerstone of wellness and healing, catering to the region's healthcare requirements.

Facility: Multi-Speciality Hospital

Client: R.C. Agarwal Hospital, Assam

Built-up-area: 15000 sq. ft



INTEGRA VENTURES ACTIVITIES (JUL '23 - SEPT '23)



Medical Expo India and Integra Ventures, in their capacity as Academic Partners, jointly organized a two-day enlightening seminar at Maniram Dewan Trade Centre, Guwahati held on the 12th and 13th of August. This seminar, dedicated to the healthcare landscape in Northeast India, brought together distinguished speakers from across the nation. The comprehensive agenda was structured around four distinct themes, including the design of forward-thinking hospitals, the optimization of hospital operational efficiency, strategies for the effective planning and development of the hospital workforce, and emerging approaches in healthcare strategy and delivery.



On the 29th of September, NatHealth in collaboration with Invest India organized a landmark event in Guwahati - The East Region Roadshow, aimed at unraveling the immense healthcare potentials of Assam. Integra ventures, member of NATHealth & a local partner of NorthEast, has been actively involved in the roadshow since its inception. The event witnessed the gathering of over 70 esteemed experts from the healthcare ecosystem. This illustrious group comprised senior officials from the Government of Assam, distinguished industry leaders, and representatives from prominent organizations such as the Indian Medical Association, Assam Cancer Care Foundation, Assam Medical Services Corporation Limited, IIT Guwahati, Association of Healthcare Providers of India Northeast chapter, as well as key players from the diagnostic, medical technology, and pharmaceutical sectors.

EMPLOYEE SPOTLIGHT

From this issue, we are introducing Employee Spotlight section, and we are delighted to feature **Mr. Sankar Sarma**, a dedicated and driven member of our Civil team.



Mr Sankar joined **Integra Ventures** 4 years ago and has since proven to be an invaluable asset. His commitment to excellence and unwavering dedication to our organisation's mission makes him a shining example of what it means to be part of our team.

His willingness to take on new challenges and embrace change has not only benefitted his personal growth but contributed significantly to the success of our Civil department. One of Sankar's most impressive qualities is his dedication towards work. He is known for his exceptional teamwork and their willingness to go the extra mile to ensure the success of team projects. Gandhi Mandap is an excellent example of a project or achievement where his quality was evident. Outside work, Sankar is known for his interests in cricket.

His dedication, teamwork, and positive attitude make him a role model for all employees. We are grateful to have him as part of our IV family and look forward to witnessing his continued success with us.

Stay tuned for our next Employee Spotlight as we continue to celebrate the exceptional talent that makes Integra Ventures thrive.



JOIN OUR TEAM

01

MANAGER – Business Development

(Exp: 2–3 years, Location: Guwahati, Assam)

02

Architectural Draughtsman

(Exp: 3–5 years, Location: Guwahati, Assam)

03

Healthcare Management Consultant

(Exp: 2–3 years, Location: Bengaluru, Karnataka)

Contact for Details at :



jobs@integra-ventures.com



+91 8473872062



www.integra-ventures.com



INTEGRA VENTURES

HEALTHCARE | INFRASTRUCTURE | CONSULTANCY
solutions projects services

